



B-O-F Corporation

2453 Prospect Drive, Suite 191

Aurora, IL. 60502 USA

(630) 585-0020 FAX: (630) 585-0450

(800) 323-2517 USA & CANADA

www.bofcorp.com

"THE" Gravity Flow Shelving People for over 60 Years

Nyla-Track II[®]

Installation Instructions



Sanitation Listed, Conforms to NSF
(National Sanitation Foundation) Standard 2

© Copyright 1998, 2002, 2004, 2007, 2008, 2009,
2011, 2012, 2013, 2014, 2016, 2017, 2018

BOF Corporation
Printed in USA

INSTALLATION INSTRUCTIONS - KEYHOLED UPRIGHTS

Tools required for installation: Ratchet with 1/2" socket, or 1/2" wrench, level, and Phillips screwdriver.

- ▶ **Step 1: Uprights** (Fig. 1) are to be set up with the teardrop keyholes pointing downward (See enlarged view). Stand the first upright as shown below and locate the holes for the sway brace. There is an "UP" sticker in the rear. Standard uprights are 2" channel; 1-1/2" uprights are often placed next to existing wire shelving or placed two-together behind mullions. Upright placement is shown on BOF store-specific drawing/ schematic.

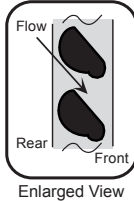
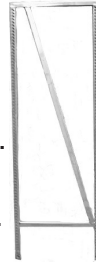
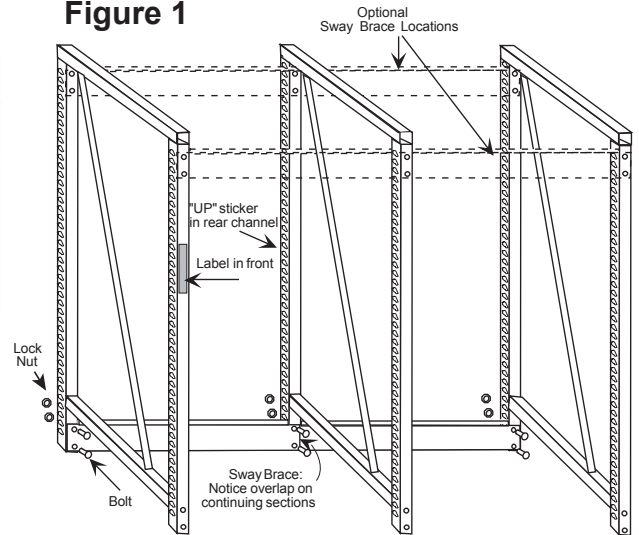
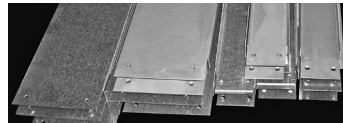


Figure 1



- ▶ **Step 2: The Sway Brace** can be installed in either the top-front, top-rear, or bottom-rear position. Line up the two holes in the sway brace with the two holes in the upright (Fig.1). Sway braces are 7" or 3"; the end flanges can both be 2" or both 1.5", or one of each. Use the ones that match the widths of the uprights you are joining.



Insert the bolts through the holes. Install the lock nuts as shown and tighten finger tight. Continuing sections are attached by overlapping the sway braces. Set up by door frames or sets



DO NOT completely tighten any of the bolts until all connecting sections are attached, and the bottom 3 shelves of each unit have been installed.

- ▶ **Note:** One regular and one short sway brace per unit are shipped for units 6' or more in depth. **BOTH SWAY BRACES MUST BE INSTALLED.** Short sway brace should be installed top-front for proper product flow.

Failure to install, or removal of sway braces will void the Product Warranty and could result in injury or destruction of property.

If behind doors, position uprights 13" to 15" away from the sill for 3' units, so that LED/lighting will highlight the full shelf. Distance from sill varies with shelf depth. A chalk line on the floor eliminates repeated measuring.

- ▶ When all sections of uprights and sway braces are attached, in position in the cooler, with 3 bottom shelves, tighten all the bolts, being sure all uprights are plumb and level as you tighten them.

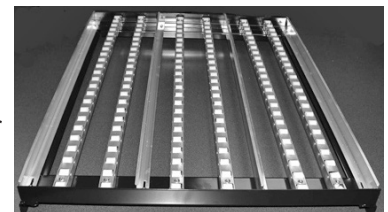
SHELF INSTALLATION

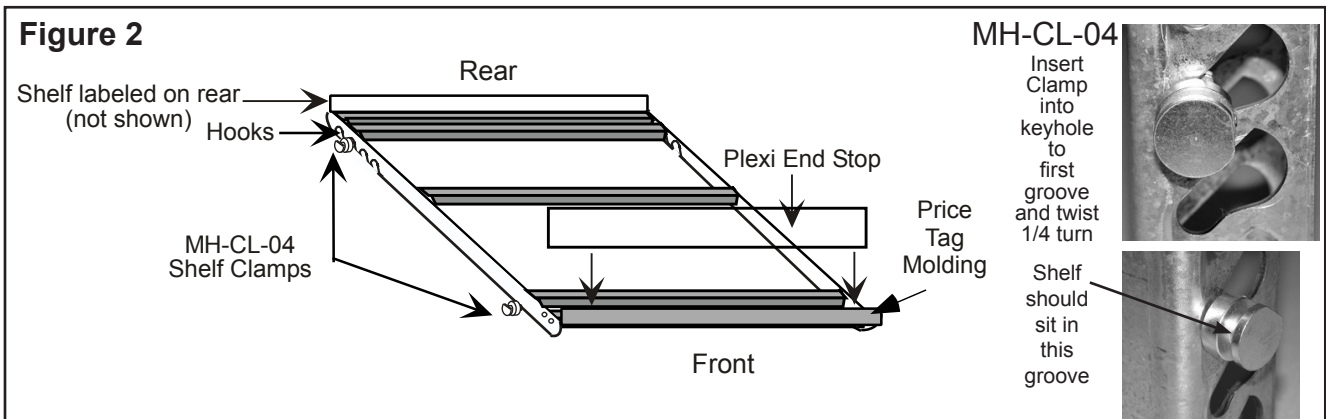
- ▶ **Step 3: Shelves:** (Fig. 2) Select the proper shelves as shown on the enclosed schematic. Shelves are numbered on the back to correspond.

Slide Track shelf for 6 packs and singles



Roll Track shelf for packaged beer





- **Step 4:** There are 4 (four) **Shelf Clamps** for each shelf. They can be installed in one direction only. Align long flat side of clamp with long flat side of the keyhole, insert and twist 1/4 turn (Fig.2), in the approximate shelf locations per the enclosed job schematic. Count keyholes or use a tape measure to figure height from floor. **Be sure clamps sit at the bottom of the keyhole.**



USE THE CHART BELOW FOR APPROXIMATE HEIGHTS

Shelf	Product	Shelf Height Clearance (includes thickness of shelf)
0003	6 Pk Cans/Bottles	9" Can - 12" Bottles...Slide Track
0004	6 Pk. Cans/Bottles Wide	9" Cans - 12" Bottles...Slide Track
0005	Cases of Bottles	15" ... Roller Track
0006	12/15/18 Pk Bottles/12 Pk Cans Flat/30 Pk Cans	12" Bottles/10"/12" Cans...Roller Track
0007	12/15/18/24 Pk Cans on edge	12" ...Roller Track , 15"-24 Pk
0009/0010(P)	Single Quarts standing (Petaloid base)	14" ...Slide Track
0011/0012(P)	Single 10-16 oz standing (Petaloid base)	12" ...Slide Track
0013/0014(P)	Single 16-24 oz standing (Petaloid base)	12" ...Slide Track
0015(P)	1 Liter Bottles (Petaloid base)	13" ...Slide Track
0016(P)	2 Liter Bottles (Petaloid base)	15" ...Slide Track

Note that the keyholes are spaced on 1" centers. For adjusting pitch, generally 2"-3" pitch per foot of shelf depth is sufficient for slide track shelves and 1"-2" pitch per foot of shelf depth is sufficient for roller track shelves.

- Shelf frames are manufactured with four hooks on each side near the rear of the shelf (Fig. 2). These hooks engage the rear shelf clamps as shown. Front of the shelf rests in the slot in the clamp. **Use the REAR hooks on 4' shelves that have an additional set of 4 front hooks, UNLESS adding to existing shelving with front hooks.**
- **Step 5:** Slide the shelves between the uprights from the back. Start with the **bottom** shelf first and position **as far forward as possible**. Be sure that the hooks are fully engaged into the slot in the shelf clamps.
- **Step 6:** Install Price Tag Molding (and Plexi End stop on singles shelves). (Page 4)



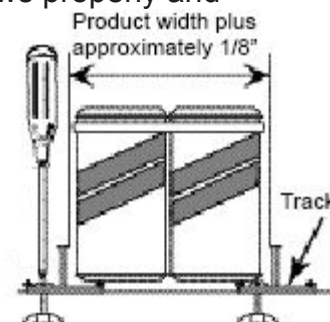
FACING AND PITCH ADJUSTMENTS BY OWNER

SHELF PITCH AND HEIGHT

If more or less pitch is required, first empty all the product from the shelf. Raise the shelf and move the shelf clamps up or down to the position where product flows properly and proper shelf height clearance is attained.

ADJUSTMENT OF TRACK AND SHELVES

We set the spacings for standard product sizes; however, some of the track may have to be adjusted to accommodate the variety of package sizes. To adjust the track, loosen the screw that holds down the track. Using a sample of the actual item to be merchandised, slide the track sideways until product fits with approximately 1/8" clearance. Tighten the screw.

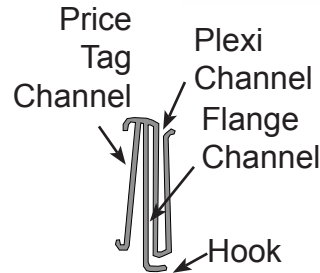
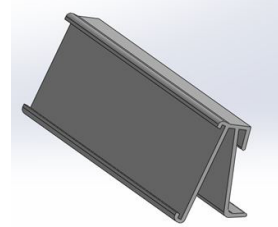


INTEGRATED PRICE TAG MOLDING INSTALLATION

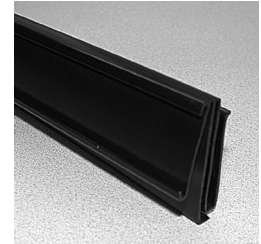
PTM for Packaged Beer shelves

- ▶ Price Tag Molding clips on to the shelf on the front vertical flange (and sometimes the rear by customer request). Center the PTM over the shelf front so that the flange is entering the flange channel. BY HAND, press down on the PTM, sliding the hook down the shelf front until it slides under the bottom edge of the shelf, taking care to work the hook over the weld at the shelf sides. If you have a color strip insert, slide it in at this time.

For Packaged Beer



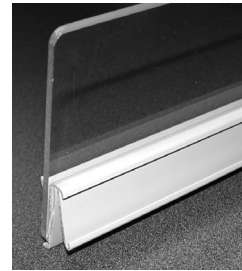
For Singles



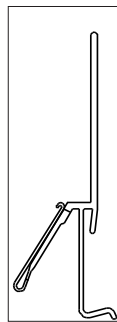
INSTALLATION INSTRUCTIONS FOR OPTIONAL ITEMS

Plexi for Singles

- ▶ By hand, press a long edge of the plexi into the Plexi channel on the back of the PTM; make sure it sits all the way to the bottom.



IESM



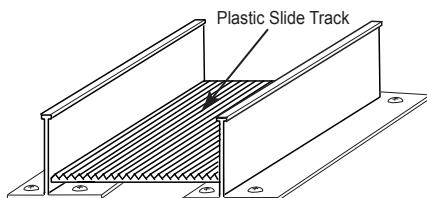
Integrated End Stop Molding for Singles



Your order may include IESM to match existing equipment.

- ▶ Install IESM in the same manner as PTM (above), using your hands to press the channel onto the flange, centering the IESM on the shelf front.

PST Plastic Slide Track (standard on "P" shelf)



The PST is used to help support Petaloid (Star) base bottles which have a tendency to tip. Simply place the PST between the tracks as shown.