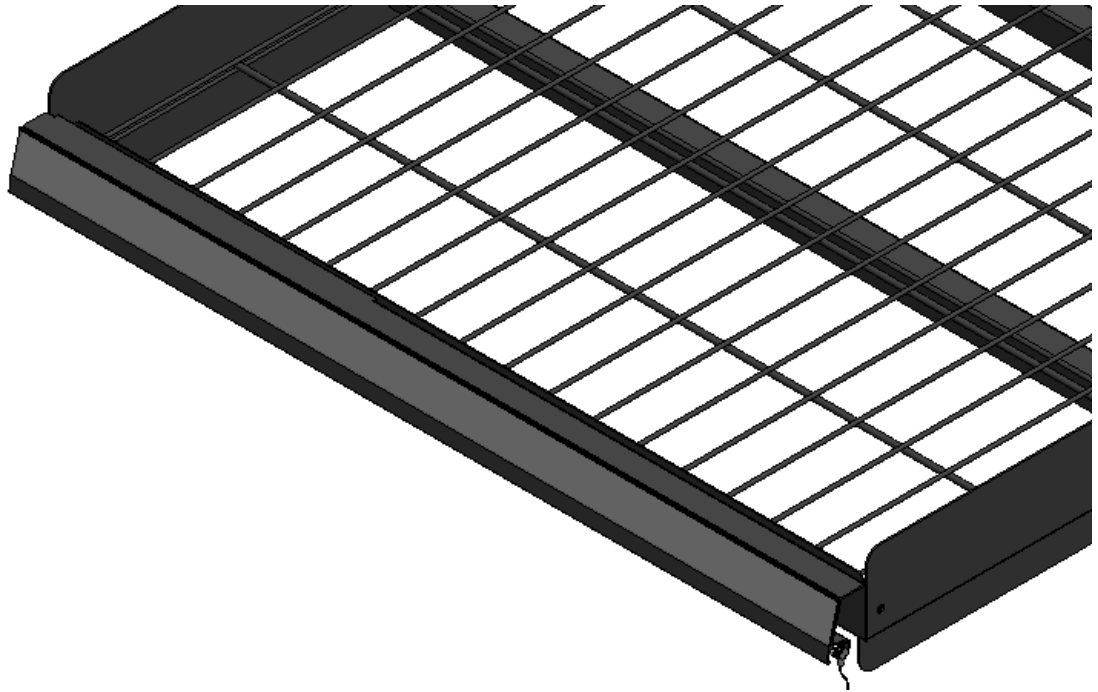




INNOVATIVE MERCHANDISING SOLUTIONS



LED INSTALL ASSEMBLY GUIDE



Intertek

Sanitation Listed
Certified to NSF/ANSI 2 by Intertek

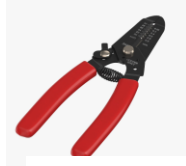
-Size of parts will differ depending on customer's order.

-Quantity of parts might differ depending on customer's order.

NEED:



One people needed



Wire Cutter

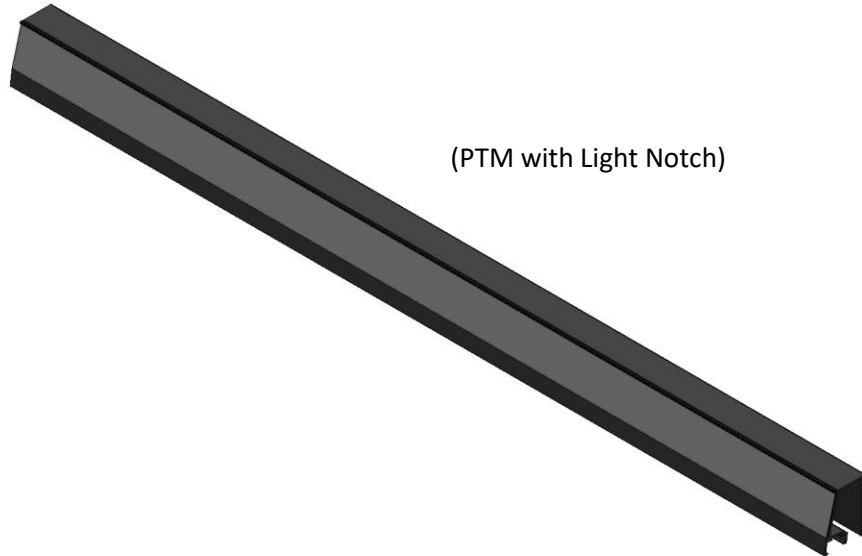


Utility
Gloves

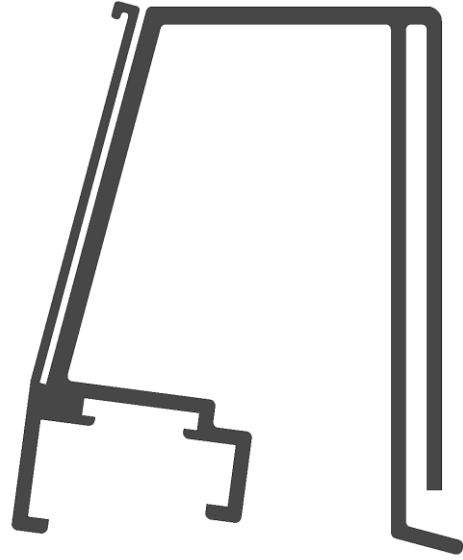


Wire Couplers
or jumpers

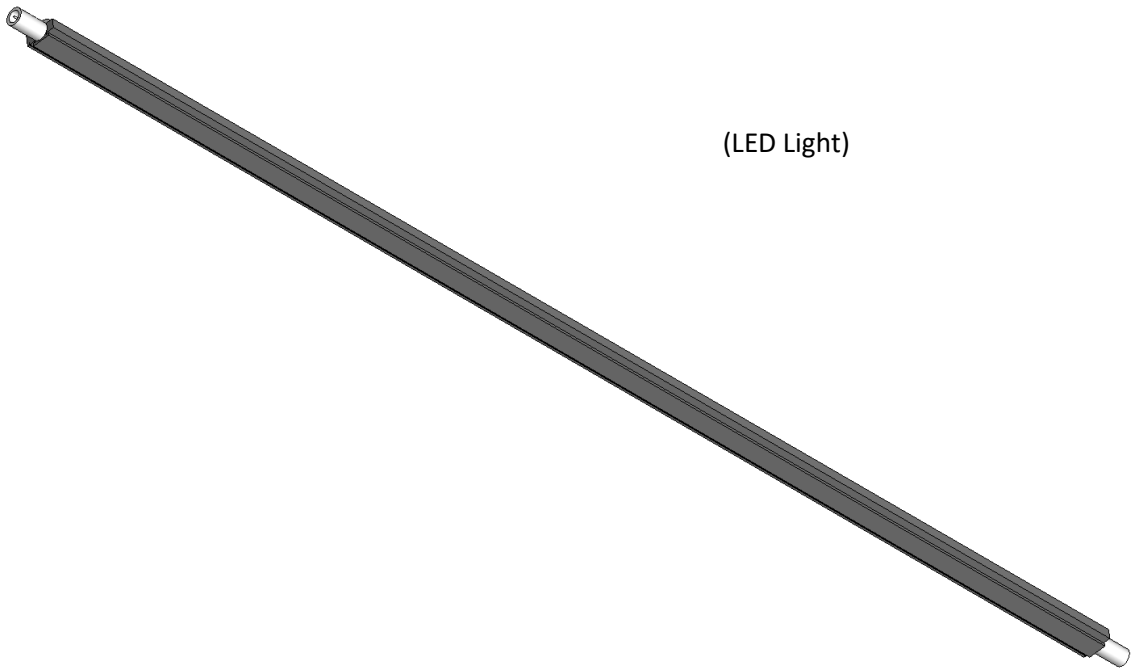
PARTS LIST

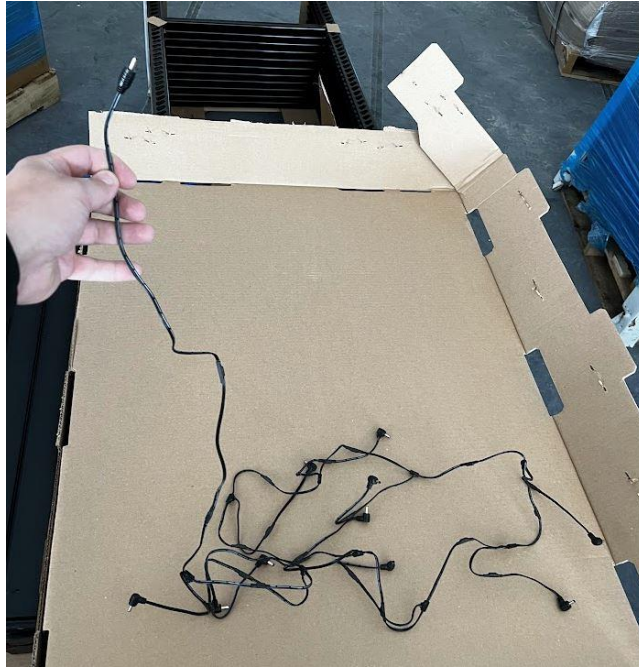


(PTM with Light Notch)

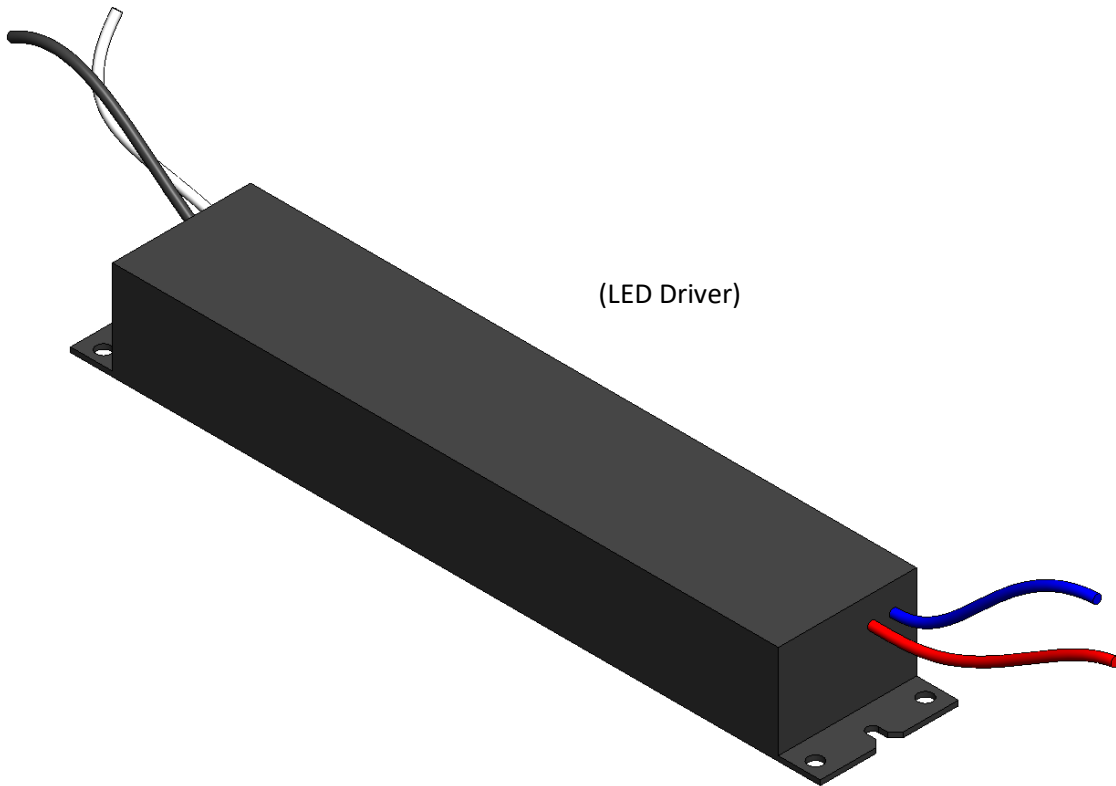


(LED Light)





(Wire Tree)



(LED Driver)

Warning: This installation requires hardwiring, this must be done by a trained electrician and disconnected from any outlet, power source, or anything that generates electricity until the end of the installation.

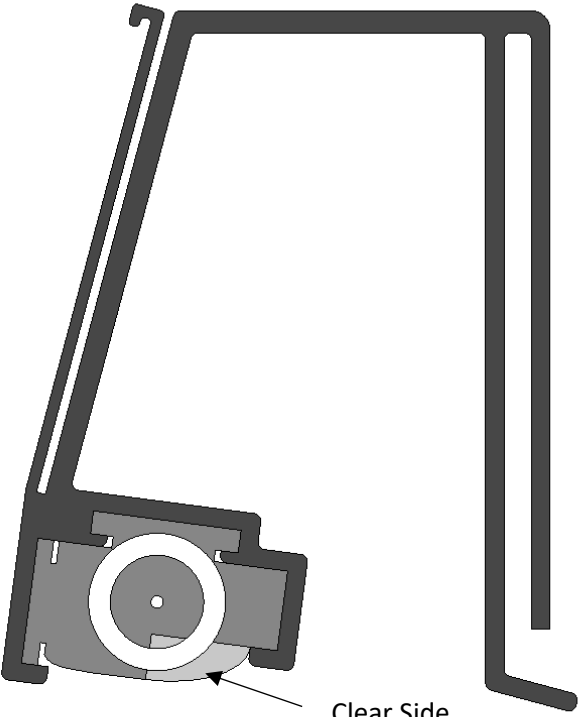
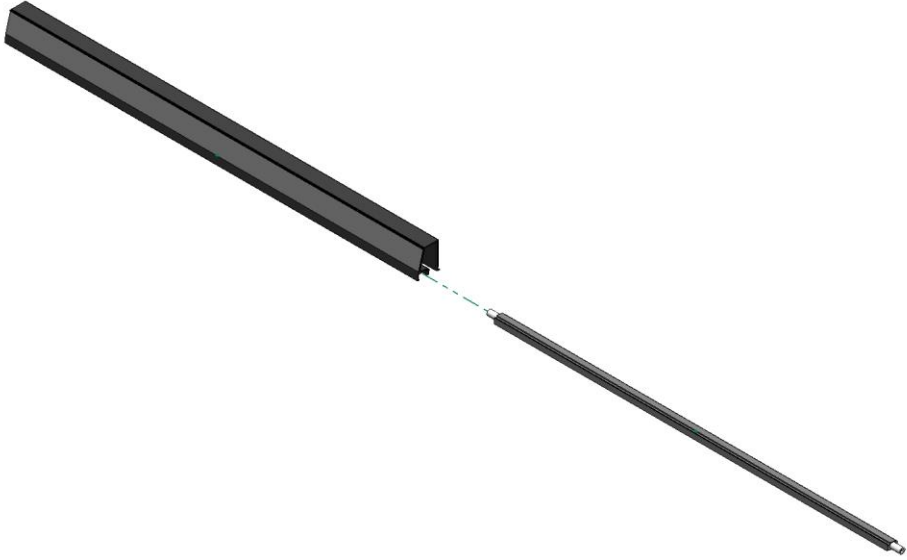
Step 1: With the wire cutters, cut at the end of the Wire tree the main line plug (It is the only straight plug on the wire tree, the other ones are L plugs **DO NOT CUT THOSE**)



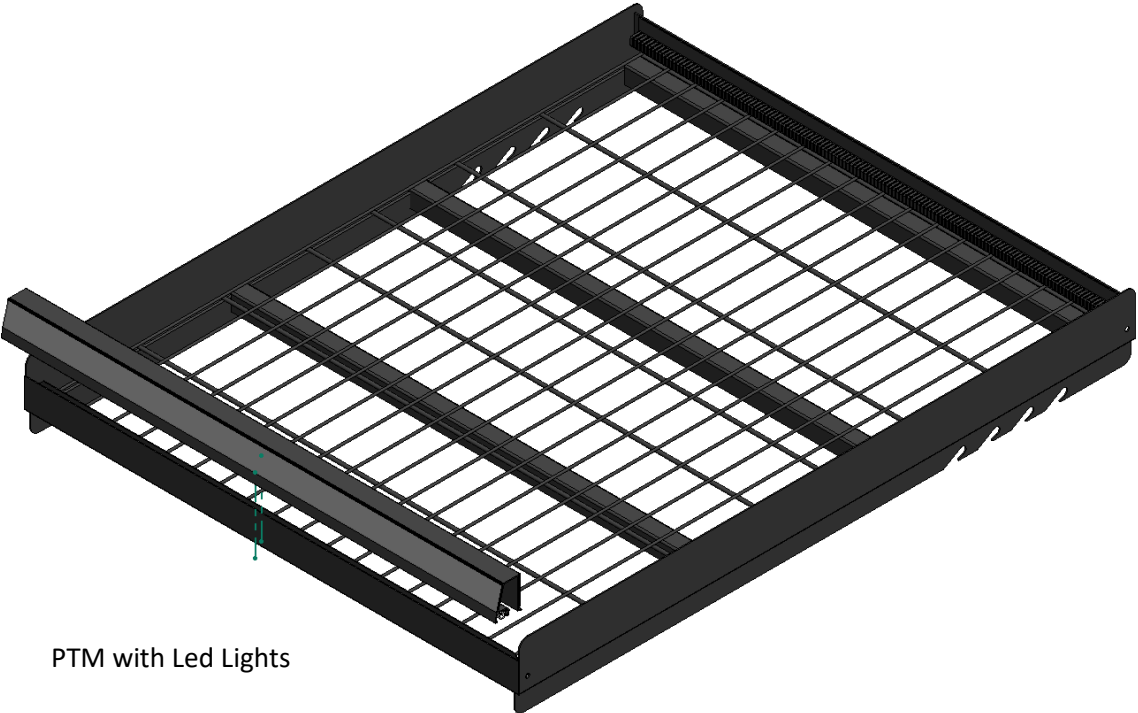
Connect the two small wires after the cut from the main line of the wire tree to the red and blue wires on the LED Driver using the wire coupler or jumpers. The Wire with the dashed white lines will be always connected to the red wire, and all black wire will always be connected to the blue wire.



Step 2: Slide in the LED lights inside the PTM on the notch at the bottom, the clear side of the light will be always facing inside.



Step3: Insert the PTM with the led lights on the front of the shelves to bring light to the section below the shelf.

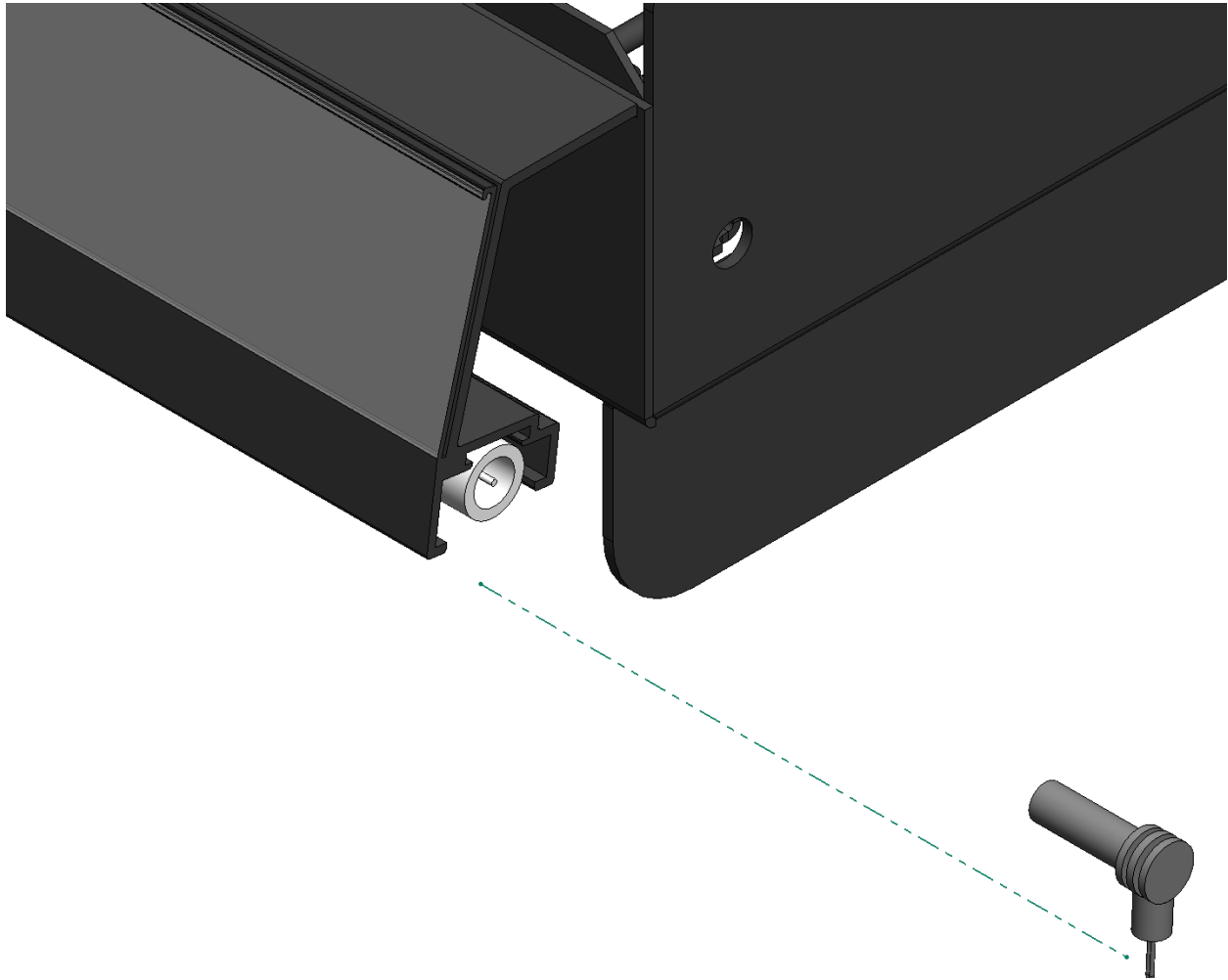


PTM with Led Lights

Step 4: From the wire tree, use each plug (L Shape) of the branches to connect the LED lights. The LED lights can be connected on either side.

-Remove the plastic plug at the end to change.

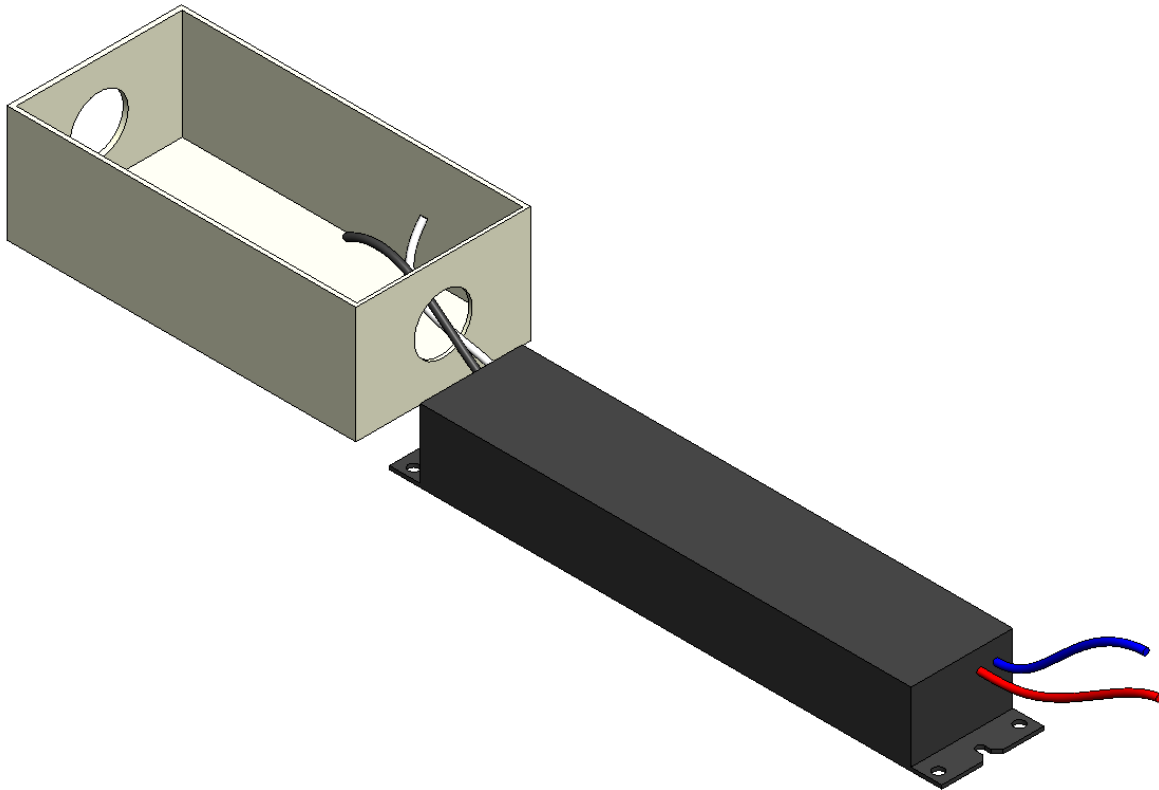
-Insert Plug on the opposite end when done.



The wire tree can be anchored/attached to the upright on the side, it has magnets to make it easier to attach or hide on the upright.



Step 5: Connect the black and white wire from the power supply to the power source or electricity source using appropriately approved connectors. The wiring will be done inside the electrical box as shown in the picture. **MAKE SURE THE POWER OR ELECTRICITY IS OFF AT THE TIME DOING THIS STEP, MIGHT CAUSE GRAVE INJURIES OR DEATH IF NOT CAREFUL.** Once everything is connected correctly and there is no hazard, turn on the power or electricity to power the lights.

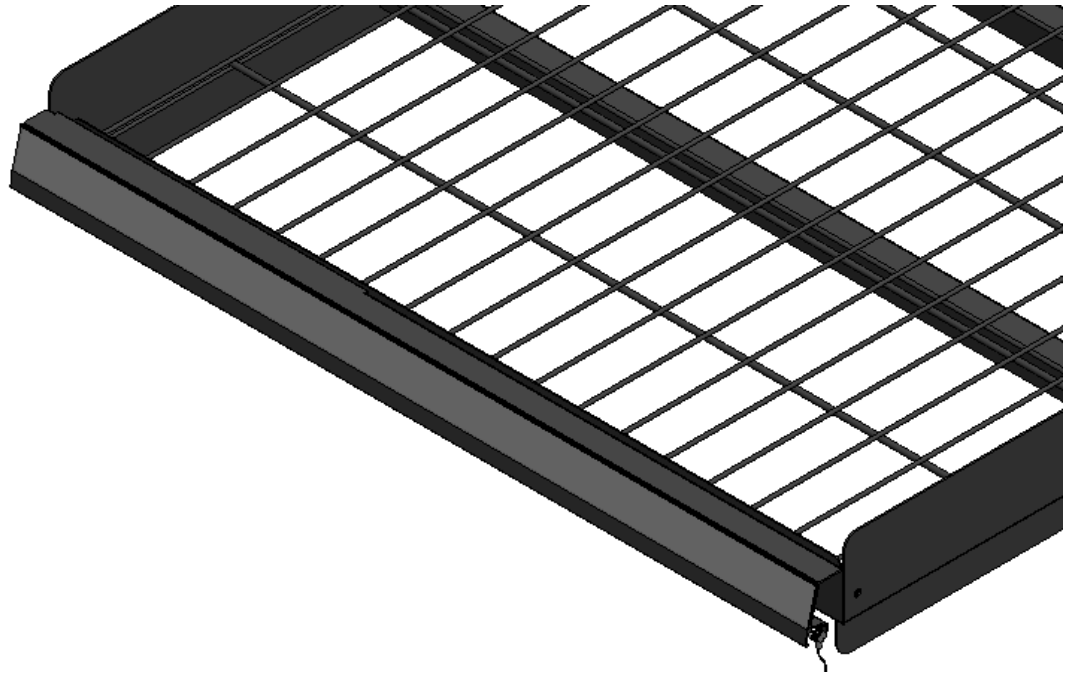


Maximum wattage on any one 100 Watt driver to be 90 watts or less

Length of LED light	Wattage of LED light	Maximum # of lights on a 100 Watt driver
---------------------	----------------------	------------------------------------------

28"	5	18
46"	7.5	12
58"	10	9

Completed Assembly:



Questions?

Call Customer Service...800-323-2517